

# PANTONE

SOLID COLORS



# RANGE

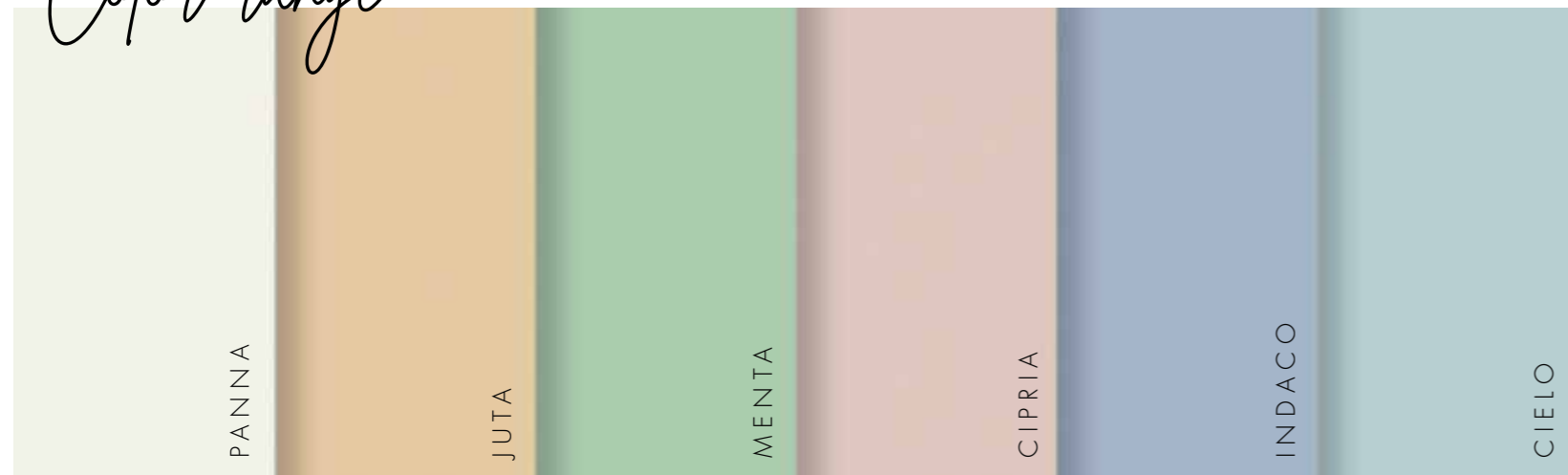
GRES PORCELLANATO RETTIFICATO  
PORCELAIN STONEWARE RECTIFIED

*Size*



30x90 cm RETTIFICATO  
12"x36" RECTIFIED

*Color range*



*Decorative mood*



WALLBRICK FLOWER

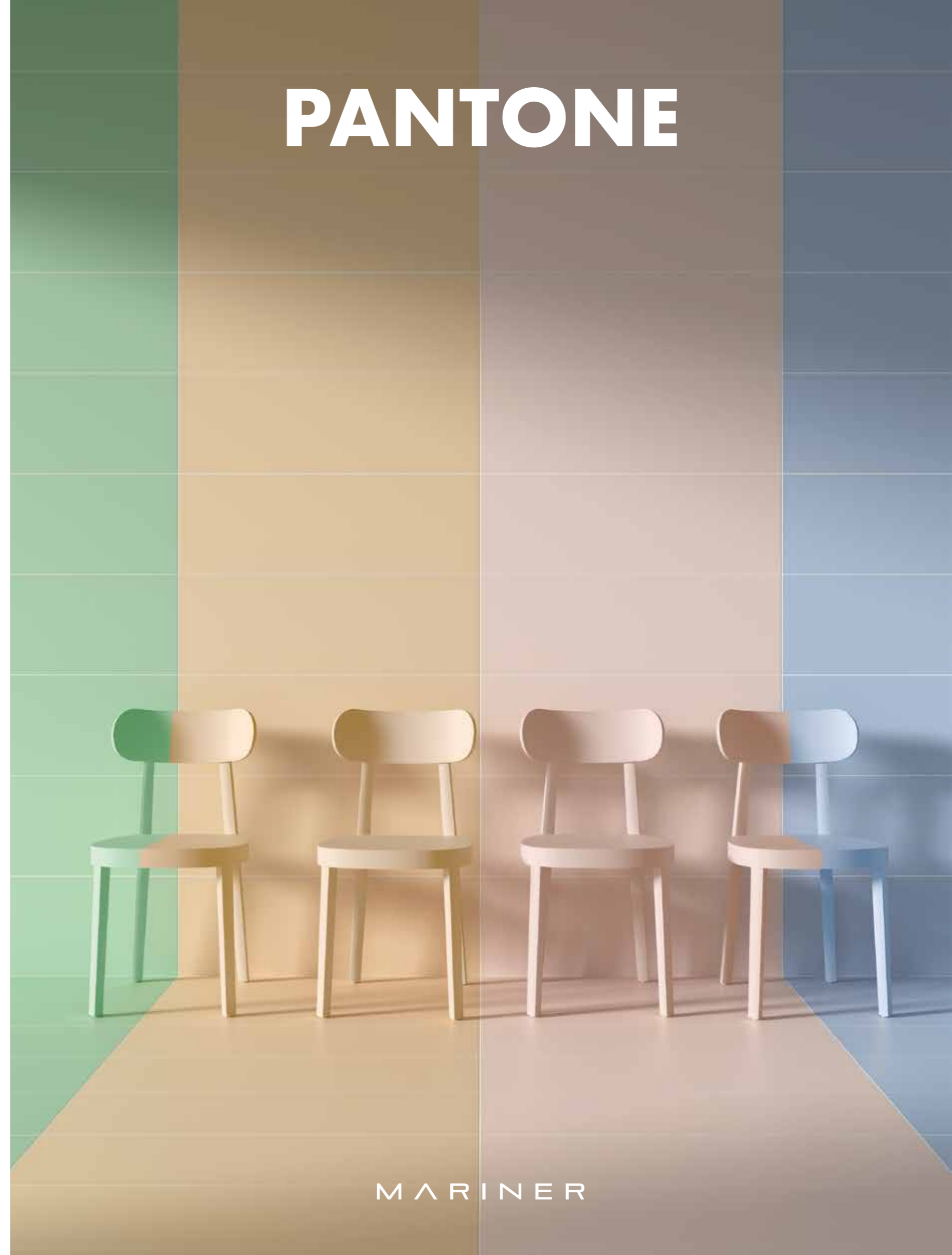


POP-UP



TWIG

# PANTONE



MARINER



PANTONE 30x90

*menta + panna + Twig*

WALLBRICK 30x90

ABSOLUTE 60x120

*elements petrol*



# 02

PANTONE 30x90

*cielo + Twig*

TONGASS 20x120

*natural*



PANTONE 30x90

*juta + panna + Twig*



*panna + wallbrick flower*

SHELLSTONE 60x120

*shellgrey*



# 04

PANTONE 30x90

*wallbrick flower*





RELAX AREA

05



PANTONE 30x90

*panna + cipria*

# 06

PANTONE 30x90

*indaco + pop-up*

THEATRO 60x120

*anthracite*

WALLBRICK 30x90



PANTONE 30x90

*indaco + pop-up*



PANTONE 30x90

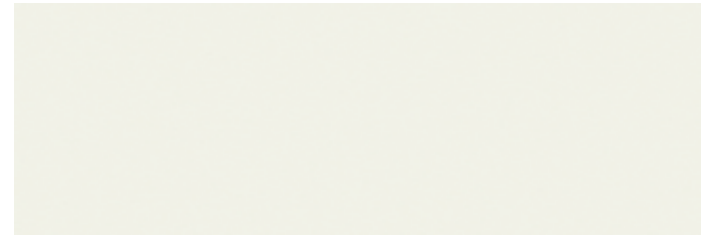
*indaco + cipria*



# PANTONE

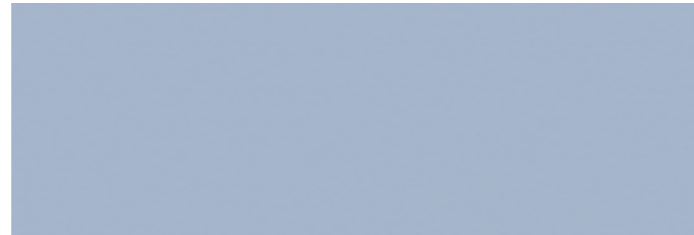
**Gres porcellanato Spessore 8 mm**  
Porcelain stoneware Thickness 0.31"

## COLOR RANGE



**1002001 PANTONE PANNA**  
30x90 cm Rettificato  
12"x36" Rectified

146



**1002002 PANTONE INDACO**  
30x90 cm Rettificato  
12"x36" Rectified

146



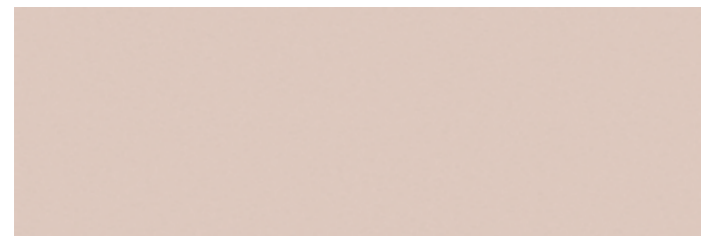
**1002005 PANTONE JUTA**  
30x90 cm Rettificato  
12"x36" Rectified

146



**1002006 PANTONE CIELO**  
30x90 cm Rettificato  
12"x36" Rectified

146



**1002003 PANTONE CIPRIA**  
30x90 cm Rettificato  
12"x36" Rectified

146



**1002004 PANTONE MENTA**  
30x90 cm Rettificato  
12"x36" Rectified

146

## DECOR RANGE



**1002007 PANTONE TWIG**  
30x90 cm Rettificato  
12"x36" Rectified

147



**1002008 PANTONE POP-UP**  
30x90 cm Rettificato  
12"x36" Rectified

180

## WALLBRICK



**WA3090BR WALLBRICK**  
30x90 cm Rettificato  
12"x36" Rectified

147



**WAFLO WALLBRICK FLOWER**  
30x90 cm Rettificato  
12"x36" Rectified

180



## PAVIMENTI ABBINATI MATCHING FLOOR TILES

**EFFETTO CEMENTO / CONCRETE LOOK**

**ABSOLUTE** 60x120 24"x48" 80x80 32"x32" 40x80 16"x32" 60x60 24"x24" 30x60 12"x24"

Cement White Cement Ivory Cement Taupe Cement Ice Cement Grey Cement Smoke Elements Earth Elements Corten Elements Petrol

**BOSTON** 60x120 24"x48" 80x80 32"x32" 40x80 16"x32" 60x60 24"x24" 30x60 12"x24"

White Mud Grey Ash

**COOL** 120x120 48"x48" 60x120 24"x48" 60x60 24"x24" 30x60 12"x24"

Ghost Almond Steel Shadow Ocean

**SHELLSTONE** 60x120 24"x48" 60x60 24"x24" 30x60 12"x24"

White Amber Grey Dark

**THEATRO** 60x120 24"x48" 80x80 32"x32" 60x60 24"x24" 30x60 12"x24"

White Bone Graphite Anthracite

**EFFETTO LEGNO / WOOD LOOK**

**ABSOLUTE** 20x120 8"x48"

Wood White Wood Ivory Wood Taupe Wood Ice Wood Grey Wood Smoke

**AXIS** 30x120 12"x48" 20x120 8"x48" 15x60 6"x24"

Birch Maple Nut Oak

**PLANET** 30x120 12"x48" 20x120 8"x48"
















Olmo Rovere Noce Cenere

**TONGASS** 20x120 8"x48"

White Blond Natural Brown

## TECHNICAL FEATURES

Norma Di Riferimento / Specification Reference ISO 13006/EN14411 appendice G Bla GL

CARATTERISTICA TECNICA TECHNICAL FEATURE	Norma Norm	PANTONE
Lunghezza e larghezza Length and width	UNI EN ISO 10545-2	Conforme / In Accordance
Spessore Thickness		Conforme / In Accordance
Rettilinearità spigoli Straightness of sides		Conforme / In Accordance
Ortogonalità Rectangularity		Conforme / In Accordance
Planarità Surface flatness		Conforme / In Accordance
Aspetto Aspect		Conforme / In Accordance
 Assorbimento d'acqua Water absorption	UNI EN ISO 10545-3	≤ 0,5%
 Resistenza a flessione Flexural strength	UNI EN ISO 10545-4	≥ 35 N/mm <sup>2</sup>
 Modulo di rottura Breaking strength		≥ 1300 N
 Determinazione della resistenza all'urto Determination of impact resistance	UNI EN ISO 10545-5	0,90
 Resistenza all'abrasione (metodo pei) Abrasion resistance (pei-method)	UNI EN ISO 10545-7	PEI 3 ÷ 5
 Coefficiente di dilatazione termica lineare Thermal expansion coefficient	UNI EN ISO 10545-8	(5,7÷5,9) X 10 <sup>-6</sup> /°C
 Resistenza agli sbalzi termici Thermal shock resistance	UNI EN ISO 10545-9	Resistente Resistant
 Determinazione della dilatazione dovuta all'umidità Determination of moisture expansion	UNI EN ISO 10545-10	0,0 mm/m
 Determinazione della resistenza al cavillo Determination of crazing resistance	UNI EN ISO 10545-11	Resistente Resistant
 Resistenza al gelo Frost resistance	UNI EN ISO 10545-12	Ingelivo Frost-resistant
 Resistenza agli agenti chimici Resistance to chemicals	UNI EN ISO 10545-13	MIN. CLASS B LB HB
 Resistenza alle macchie Stain resistance	UNI EN ISO 10545-14	Minimo Classe 3 Minimum Class 3
 Resistenza allo scivolamento Slip resistance	DIN 51130	R9
	DIN 51097	A
	C.o.F B.C.R./D.M. 236 14/6/89	>0,40
	D.C.o.F / ANSI A326.3	>0,42
 Reazione al fuoco Reaction to fire	96/603/CE	A1 <sub>FL</sub> /A1
 Grado di variazione cromatica Aesthetic classes	ANSI A137.1	V2



## PACKAGING

FORMATO SIZE	SPESORE THICKNESS	PEZZI/COLLO PIECES/BOX	MQ/COLLO SQM/BOX	KG/COLLO KG/BOX	COLLI/PALLET BOX/EUROPAL	MQ/PALLET SQM/EUROPAL	KG/PALLET KG/EUROPAL	DIMENSIONE PALLET EUROPAL SIZE	FASCIA PREZZO PROCE RANGE
30x90 Rettificato	8 mm	5	1,35	23,50	48	64,80	1128,00	1210x930mm	146
30x90 Twig	8 mm	5	1,35	23,50	48	64,80	1128,00	1210x930mm	147
30x90 Wallbrick	8 mm	5	1,35	23	48	64,80	1104,00	1210x930mm	147
30x90 Wallbrick Flower	8 mm	4	1,08	-	-	-	-	-	180 *
30x90 Popup	8 mm	4	1,08	-	-	-	-	-	180 *

\* Prezzo al pezzo - vendita tassativa a scatole complete | Price at piece - sale in full boxes only



MARINER

AZIENDA CON SISTEMA DI GESTIONE  
QUALITÀ CERTIFICATO  
UNI EN ISO 9001:2015