

# BOSTON



HOW TO CHOOSE STAINING MATERIALS: THE COMPLETE GUIDE



# INDUSTRIAL CHIC

L'INTESA STRAORDINARIA TRA LE  
TINTE CALDE E FREDDI DEI FONDI,  
L'ELEGANZA DEL DECORO SOFFIONE  
ED IL CARATTERE INDUSTRIAL DEL  
GEOMIX RENDONO LA COLLEZIONE  
BOSTON L'IDEALE PER PROGETTARE  
AMBIENTI INEDITI E RAFFINATI.

THE EXTRAORDINARY HARMONY BETWEEN  
WARM AND COOL COLORS, THE ELEGANCE  
OF THE DANDELION DECOR AND THE  
INDUSTRIAL CHARACTER OF THE GEOMIX  
MAKE BOSTON THE IDEAL COLLECTION TO  
DESIGN NEW AND ELEGANT LOCATIONS.





# DECORO SOFFIONI ICE

30x90

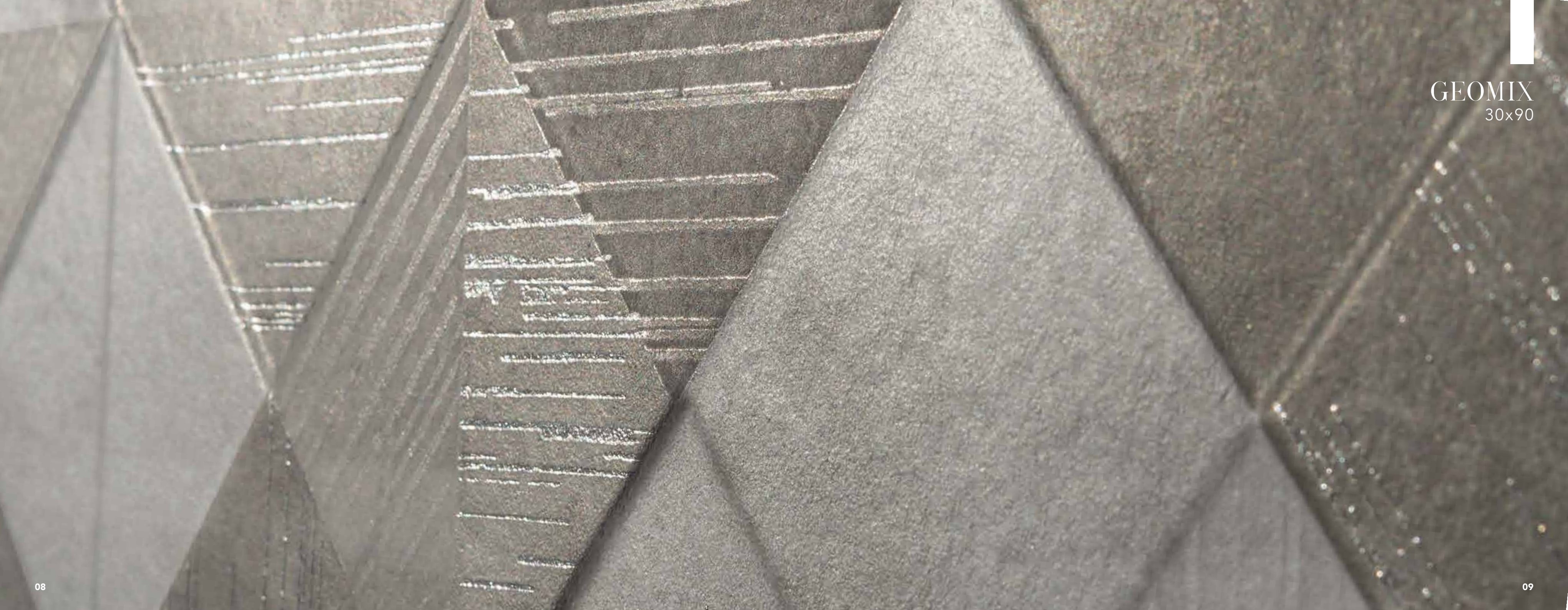




# DESIGN BATHROOM

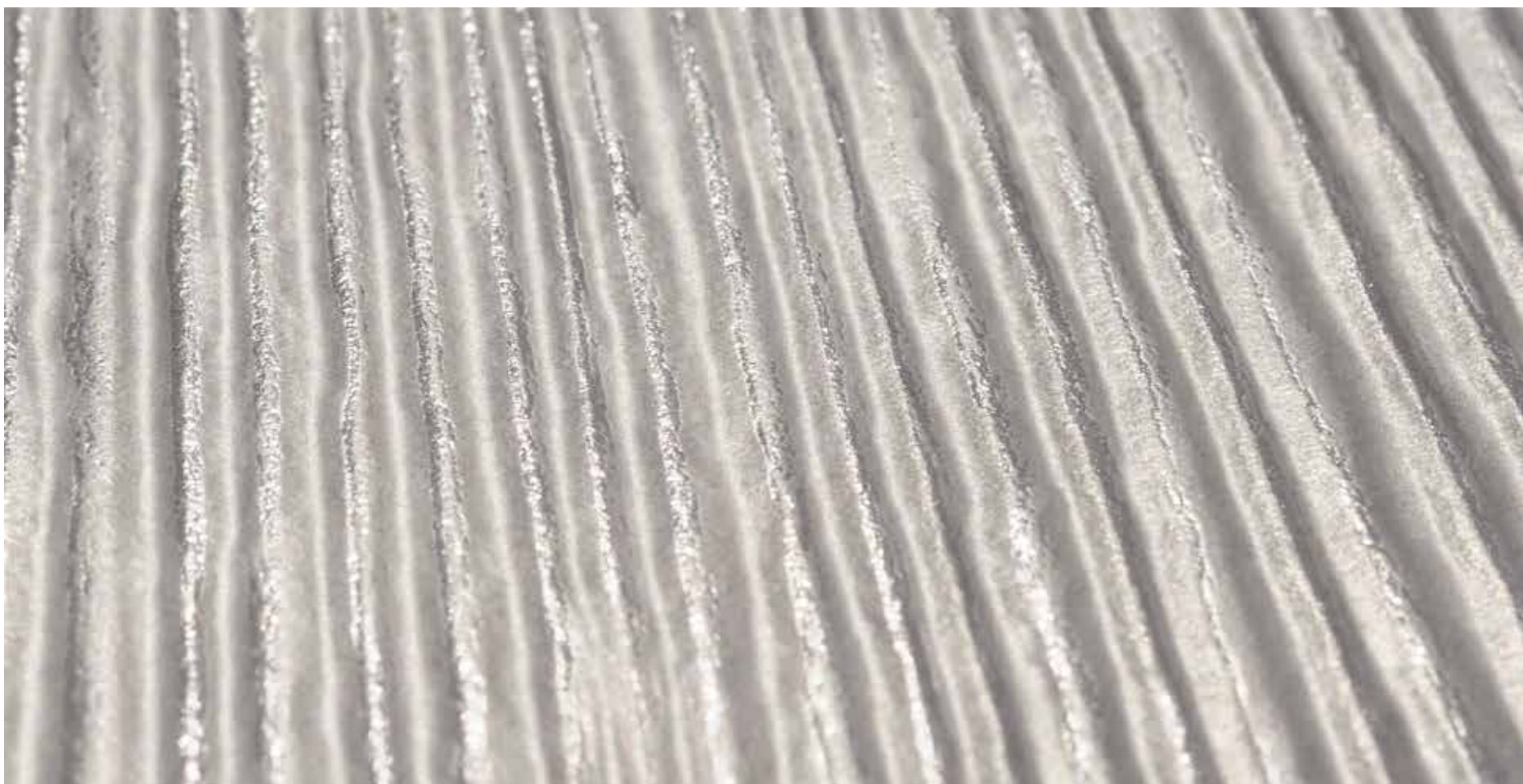






GEOMIX  
30x90

RIGHE WHITE  
30x90





# LOUNGE BAR





DECORO SOFFIONI WHITE

30x90

# BOSTON

GRES PORCELLANATO – RETTIFICATO / PORCELAIN STONEWARE – RECTIFIED  
30x90 cm 12"x36" | Spessore / Thickness 8 mm / 0.31"



**BO3090WH** Boston White  
30x90 cm / 12"x36"



**BO3090MU** Boston Mud  
30x90 cm / 12"x36"



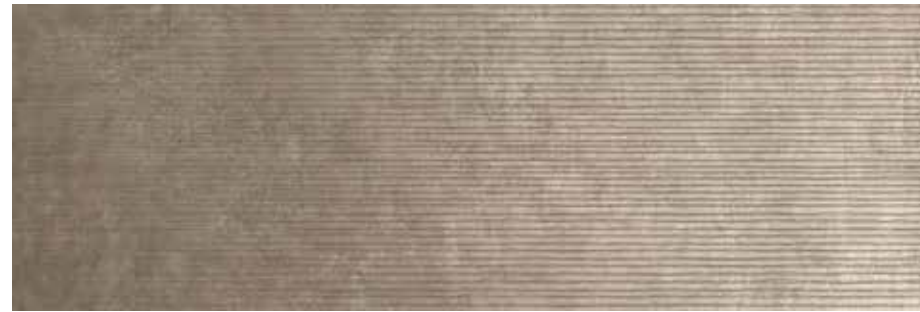
**BO3090IC** Boston Ice  
30x90 cm / 12"x36"



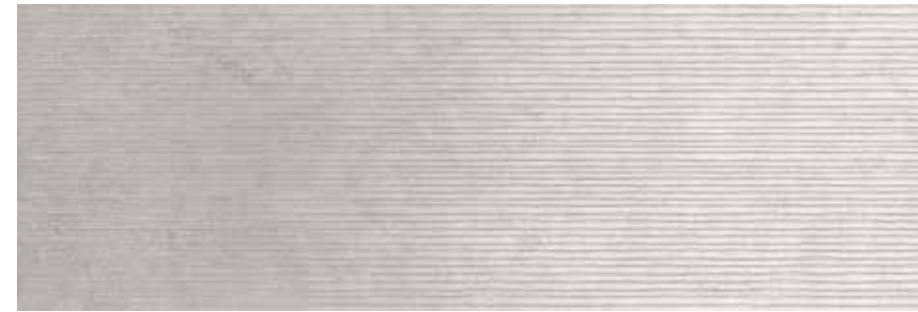
**BO3090GY** Boston Grey  
30x90 cm / 12"x36"



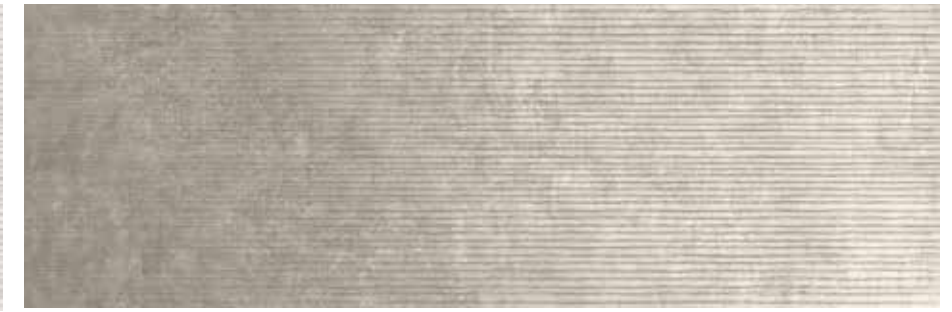
**RBO3090WH** Boston Righe White  
30x90 cm / 12"x36"



**RBO3090MU** Boston Righe Mud  
30x90 cm / 12"x36"



**RBO3090IC** Boston Righe Ice  
30x90 cm / 12"x36"



**RBO3090GY** Boston Righe Grey  
30x90 cm / 12"x36"

# BOSTON

GRES PORCELLANATO – RETTIFICATO / PORCELAIN STONEWARE – RECTIFIED  
30x90 cm 12"x36" | Spessore / Thickness 8 mm / 0.31"

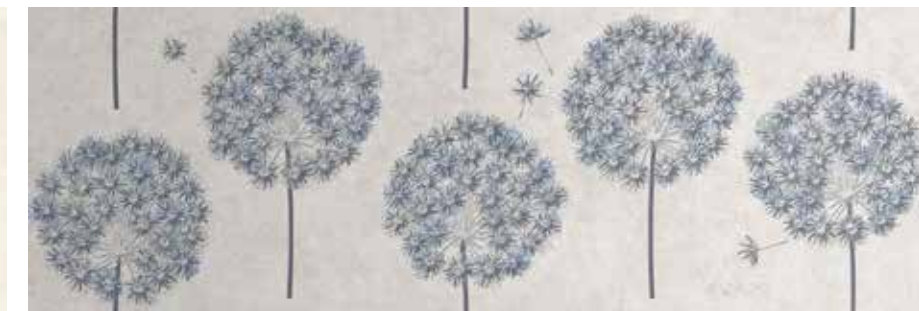


**BO3090MIX** Boston Geomix  
30x90 cm / 12"x36" (3 soggetti)

147



**BOSOFWH** Boston Decoro Soffioni White  
30x90 cm / 12"x36"



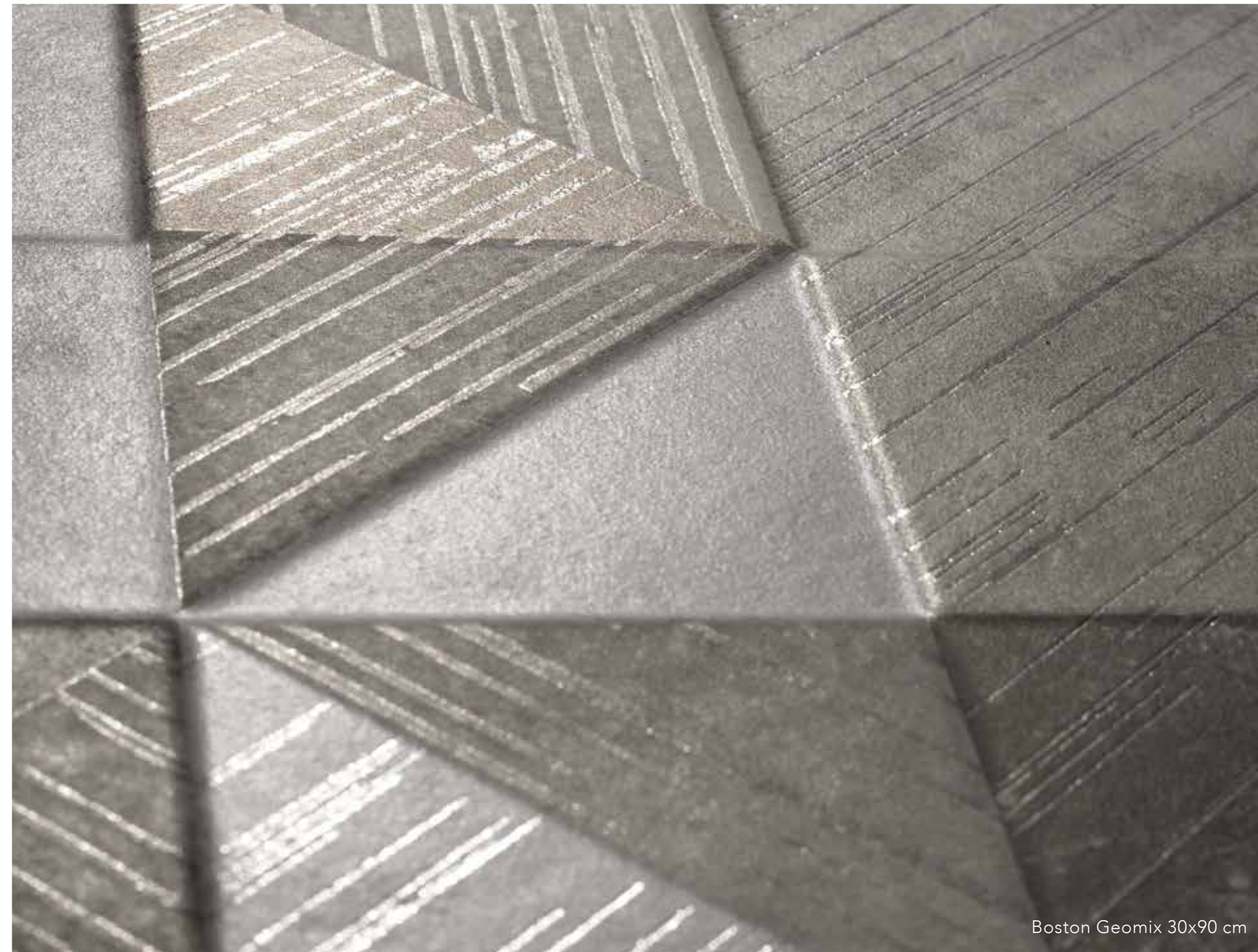
**BOSOFIC** Boston Decoro Soffioni Ice  
30x90 cm / 12"x36"

173

FORMATO SIZE	SPESORE THICKNESS	PEZZI/COLLO PIECES/BOX	MQ/COLLO SQM/BOX	KG/COLLO KG/BOX	COLLI/PALLET BOX/EUROPAL	MQ/PALLET SQM/EUROPAL	KG/PALLET KG/EUROPAL	DIMENSIONE PALLET EUROPAL SIZE	FASCIA PREZZO PROCE RANGE
30x90 Rettificato	8 mm	5	1,35	23,50	48	64,80	1128,00	1210x930mm	146
30x90 Geomix	8 mm	5	1,35	23,50	48	64,80	1128,00	1210x930mm	147
30x90 Righe	8 mm	5	1,35	23,50	48	64,80	1128,00	1210x930mm	147
30x90 Decoro Soffioni	8 mm	4	1,08	-	-	-	-	-	173 *

\* Prezzo al pezzo - vendita tassativa a scatole complete | Price at piece - sale in full boxes only

CARATTERISTICA TECNICA TECHNICAL FEATURE	NORMA NORM	BOSTON 30x90
<b>LUNGHEZZA E LARGHEZZA</b> LENGTH AND WIDTH		<b>CONFORME</b> IN ACCORDANCE
<b>SPESSORE</b> THICKNESS		<b>CONFORME</b> IN ACCORDANCE
<b>RETTILINEITÀ SPIGOLI</b> STRAIGHTNESS OF SIDES	UNI EN ISO 10545-2	<b>CONFORME</b> IN ACCORDANCE
<b>ORTOGONALITÀ</b> RECTANGULARITY		<b>CONFORME</b> IN ACCORDANCE
<b>PLANARITÀ</b> SURFACE FLATNESS		<b>CONFORME</b> IN ACCORDANCE
<b>ASPETTO</b> ASPECT		<b>CONFORME</b> IN ACCORDANCE
<b>ASSORBIMENTO D'ACQUA</b> WATER ABSORPTION	UNI EN ISO 10545-3	<b>≤ 0,5%</b>
<b>RESISTENZA A FLESSIONE</b> FLEXURAL STRENGTH	UNI EN ISO 10545-4	<b>≥ 35 N/mm<sup>2</sup></b>
<b>MODULO DI ROTTURA</b> BREAKING STRENGTH		<b>≥ 1300 N</b>
<b>DETERMINAZIONE DELLA RESISTENZA ALL'URTO</b> DETERMINATION OF IMPACT RESISTANCE	UNI EN ISO 10545-5	<b>0,90</b>
<b>RESISTENZA ALL'ABRASIONE (METODO PEI)</b> ABRASION RESISTANCE (PEI-METHOD)	UNI EN ISO 10545-7	<b>DA 3 A 5 IN BASE AL COLORE</b> FROM 3 TO 5, ACCORDING TO COLOR
<b>COEFFICIENTE DI DILATAZIONE TERMICA LINEARE</b> THERMAL EXPANSION COEFFICIENT	UNI EN ISO 10545-8	<b>(5,7+5,9) X 10<sup>-6</sup>/°C</b>
<b>RESISTENZA AGLI SBALZI TERMICI</b> THERMAL SHOCK RESISTANCE	UNI EN ISO 10545-9	<b>RESISTENTE</b> RESISTANT
<b>DETERMINAZIONE DELLA DILATAZIONE DOVUTA ALL'UMIDITÀ</b> DETERMINATION OF MOISTURE EXPANSION	UNI EN ISO 10545-10	<b>0,0 mm/m</b>
<b>DETERMINAZIONE DELLA RESISTENZA AL CAVILLO</b> DETERMINATION OF CRAZING RESISTANCE	UNI EN ISO 10545-11	<b>RESISTENTE</b> RESISTANT
<b>RESISTENZA AL GELO</b> FROST RESISTANCE	UNI EN ISO 10545-12	<b>INGELIVO</b> FROST-RESISTANT
<b>RESISTENZA AGLI AGENTI CHIMICI</b> RESISTANCE TO CHEMICALS	UNI EN ISO 10545-13	<b>MINIMO CLASSE B</b> MINIMUM CLASS B
<b>RESISTENZA ALLE MACCHIE</b> STAIN RESISTANCE	UNI EN ISO 10545-14	<b>MINIMO CLASSE 3</b> MINIMUM CLASS 3
<b>RESISTENZA ALLO SCIVOLAMENTO</b> SLIP RESISTANCE	DIN 51130 C.o.F B.C.R./D.M. 236 14/6/89 D.C.o.F / ANSI A326.3	<b>R9</b> <b>μ &gt;0,40</b> <b>&gt;0,42</b>
<b>REAZIONE AL FUOCO</b> REACTION TO FIRE	96/603/CE	<b>A1<sub>FL</sub>/A1</b>
<b>GRADO DI VARIAZIONE CROMATICA</b> AESTHETIC CLASSES	ANSI A137.1	<b>V2</b>



Boston Geomix 30x90 cm

