

ACUSTICO 12

“ A NEW LIFE NOW ”

VIVA
MADE



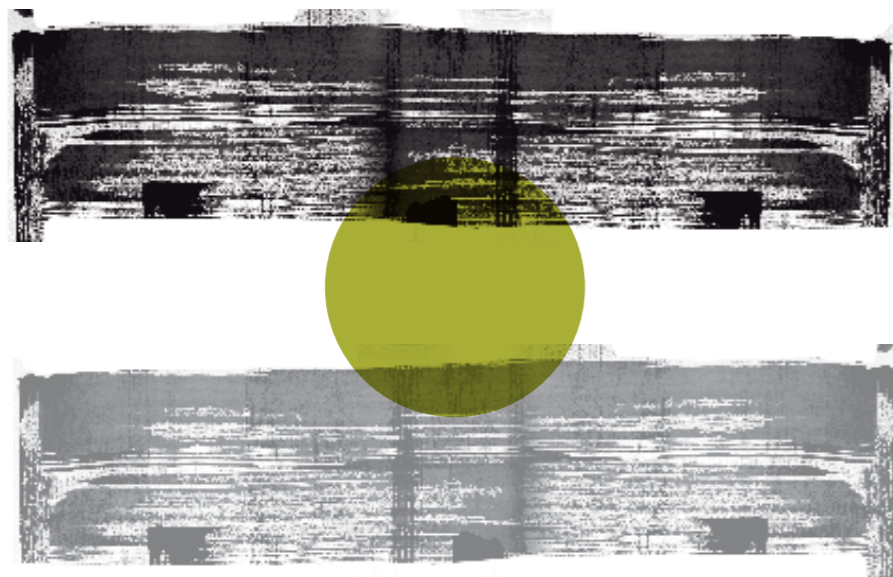


12

il suono della terracotta,
colori polverosi

The sound of terracotta, dusty colours.
Le chant de la terre cuite, des couleurs poudrées.
Der Klang von Terrakotta, staubige Farben.
El sonido de la terracota, colores pulverulentos.
Звук терракоты, пыльные цвета.

(punti di vista)



point of view

idee in
movimento

Ever-developing ideas

12



987K2R
COTTO NAT. RETT.
60x120 - 23^{5/8}"x47^{1/4}"



987K2R
COTTO NAT. RETT.
60x120 - 23^{5/8}"x47^{1/4}"





987K6R
BROWN NAT. RETT.
60x120 - 23^{5/8}"x47^{1/4}"



607K6R
BROWN NAT. RETT.
60x60 - 23^{5/8}"x23^{5/8}"



977K6R
BROWN NAT. RETT.
15x60 - 57^{7/8}"x23^{5/8}"

117K6R
BROWN NAT. RETT.
10x60 - 31^{5/16}"x23^{5/8}"

307KOSR
WHITE NAT. RETT.
30x30 - 11^{13/16}"x11^{13/16}"





307KOSR
WHITE NAT. RETT.
30x30 - 11^{13/16}"x11^{13/16}"



forme ampie e armonia

Ample dimensions and harmony

differences / analogies



(differenze) (analogie)

307K2SR
COTTO NAT. RETT.
30x30 - 11^{13/16}" x 11^{13/16}"





307K2SR
COTTO NAT. RETT.
30x30 - 11^{13/16}"x11^{13/16}"

307K2RB
ACUSTICO 30 COTTO
30x30 - 11^{13/16}"x11^{13/16}"



307K8SR
GREY NAT. RETT.
30x30 - 11^{13/16}"x11^{13/16}"



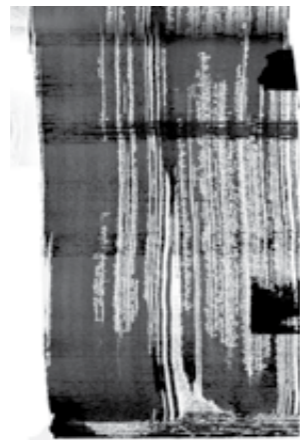
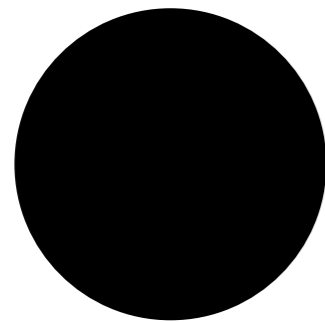


307K8SR
GREY NAT. RETT.
30x30 - 11^{13/16}"x11^{13/16}"



607K8R
GREY NAT. RETT.
60x60 - 23^{5/8}"x23^{5/8}"





(evoluzione)



evolution

12

le dimensioni si **espandono**
per rispondere
al contemporaneo

Sizes expand, reflecting contemporary tastes

307K8SR
GREY NAT. RETT.
30x30 - 11^{13/16}"x11^{13/16}"





607K8R
GREY NAT. RETT.
60x60 - 23^{5/8}"x23^{5/8}"





987K8R
GREY NAT. RETT.
60x120 - 23^{5/8}"x47^{1/4}"

607KOR
WHITE NAT. RETT.
60x60 - 23⁵/₈"x23⁵/₈"

530D3RB
PAGLIA METROPOLI - STATALE9
15x120 - 57⁸/₈"x47¹/₄"

530D3R
PAGLIA - STATALE9
15x120 - 57⁸/₈"x47¹/₄"





987K3R
SAND NAT. RETT.
60x120 - 23^{5/8}"x47^{1/4}"



607K3R
SAND NAT. RETT.
60x60 - 23^{5/8}"x23^{5/8}"

607K3RB
ACUSTICO 60 SAND
60x60 - 23^{5/8}"x23^{5/8}"



557K6R
BROWN NAT. RETT.
30x120 - 11^{13/16}"x47^{1/4}"

solutions

Evolution and style

evoluzione e
stile





607K2RZ
COTTO RETT.
60x60 - 23^{5/8}"x23^{5/8}"

AntiSlip



987K0R
WHITE NAT. RETT.
60x120 - 23⁵/₈"x47¹/₄"



557K8R
GREY NAT. RETT.
30x120 - 11^{13/16}"x47^{1/4}"





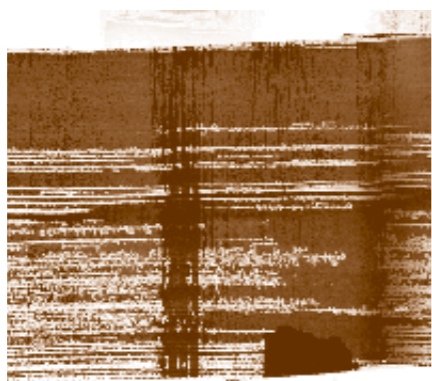
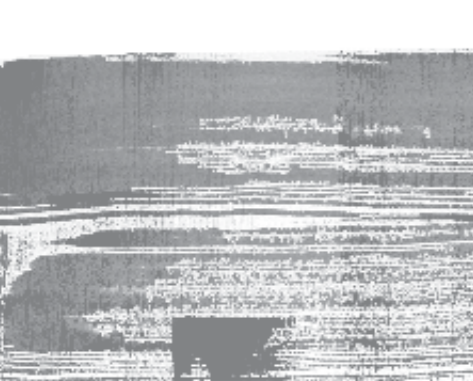
607K3R
SAND NAT. RETT.
60x60 - 23^{5/8}"x23^{5/8}"



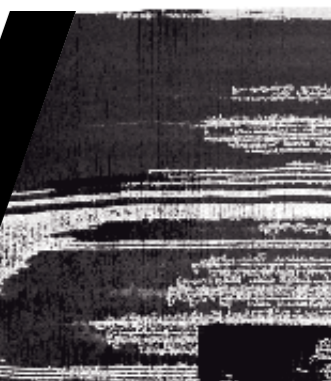
637K3SR
SAND NAT. RETT.
30x60 - 11^{13/16}"x23^{5/8}"



637K8SR
GREY NAT. RETT.
30x60 - 11^{13/16}"x23^{5/8}"



a new
life
now





colours / sizes - couleurs / formats - farben / formate - colores / tamaños - цвета / форматы

colori/formati

WHITE



987KOR White Nat. Rett.
60x120_23⁵/₈"x47¹/₄"

79B ■



557KOR White Nat. Rett.
30x120_11¹³/₁₆"x47¹/₄"

80 ■



607KOR White Nat. Rett.
60x60_23⁵/₈"x23⁵/₈"

71 ■



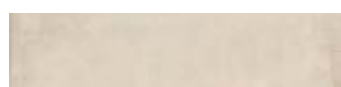
637K0SR White Nat. Rett.
30x60_11¹³/₁₆"x23⁵/₈"

71 ■



307K0SR White Nat. Rett.
30x30_11¹³/₁₆"x11¹³/₁₆"

67 ■



977KOR White Nat. Rett.
15x60_5⁷/₈"x23⁵/₈"

78 ■



117KOR White Nat. Rett.
10x60_3¹⁵/₁₆"x23⁵/₈"

78 ■



677K0SR White Nat. Rett.
15x30_5⁷/₈"x11¹³/₁₆"

78 ■



607KORZ White Nat. Rett.
60x60_23⁵/₈"x23⁵/₈"

71 ■

AntiSlip

Si consiglia la posa con fuga 2 mm - Laying with a 2 mm-joint is recommended



Alto traffico pedonale
(es. stazioni ferroviarie, aeroporti, centri commerciali)

Heavy pedestrian traffic
(e.g. railway stations, airports, retail malls)

Piétinement intense
(ex. gares, aéroports, centres commerciaux)

Starker Fußgängerverkehr
(z.B. Bahnhöfe, Flughäfen, Einkaufszentren)

Alto tráfico peatonal
(por ej. estaciones de tren, aeropuertos, centros comerciales).

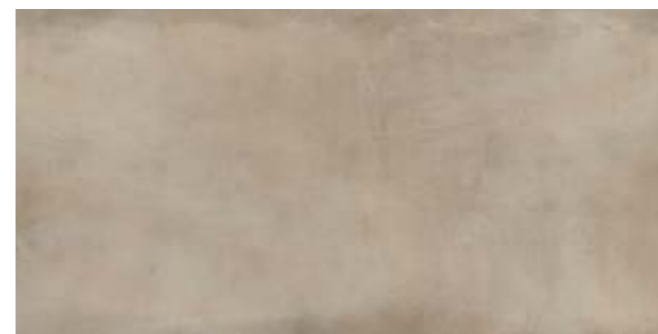
Интенсивное пешеходное движение
(напр., железнодорожные вокзалы, аэропорты)



colours / sizes - couleurs / formats - farben / formate - colores / tamaños - цвета / форматы

colori/formati

SAND



987K3R Sand Nat. Rett.
60x120_23⁵/₈"x47¹/₄"

79B ■



557K3R Sand Nat. Rett.
30x120_11¹³/₁₆"x47¹/₄"

80 ■



607K3R Sand Nat. Rett.
60x60_23⁵/₈"x23⁵/₈"

71 ■



637K3SR Sand Nat. Rett.
30x60_11¹³/₁₆"x23⁵/₈"

71 ■



307K3SR Sand Nat. Rett.
30x30_11¹³/₁₆"x11¹³/₁₆"

67 ■



977K3R Sand Nat. Rett.
15x60_5⁷/₈"x23⁵/₈"

78 ■



117K3R Sand Nat. Rett.
10x60_3¹⁵/₁₆"x23⁵/₈"

78 ■



677K3SR Sand Nat. Rett.
15x30_5⁷/₈"x11¹³/₁₆"

78 ■



607K3RZ Sand Nat. Rett.
60x60_23⁵/₈"x23⁵/₈"

71 ■

AntiSlip

Si consiglia la posa con fuga 2 mm - Laying with a 2 mm-joint is recommended



Alto traffico pedonale
(es. stazioni ferroviarie, aeroporti, centri commerciali)

Heavy pedestrian traffic
(e.g. railway stations, airports, retail malls)

Piétinement intense
(ex. gares, aéroports, centres commerciaux)

Starker Fußgängerverkehr
(z.B. Bahnhöfe, Flughäfen, Einkaufszentren)

Alto tráfico peatonal
(por ej. estaciones de tren, aeropuertos, centros comerciales).

Интенсивное пешеходное движение
(напр., железнодорожные вокзалы, аэропорты)



colours / sizes - couleurs / formats - farben / formate - colores / tamaños - цвета / форматы

colori/formati

COTTO



987K2R Cotto Nat. Rett.
60x120_23^{5/8}"x47^{1/4}"

79B ■



557K2R Cotto Nat. Rett.
30x120_11^{13/16}"x47^{1/4}"

80 ■



607K2R Cotto Nat. Rett.
60x60_23^{5/8}"x23^{5/8}"

71 ■



637K2SR Cotto Nat. Rett.
30x60_11^{13/16}"x23^{5/8}"

71 ■



307K2SR Cotto Nat. Rett.
30x30_11^{13/16}"x11^{13/16}"

67 ■



977K2R Cotto Nat. Rett.
15x60_5^{7/8}"x23^{5/8}"

78 ■



117K2R Cotto Nat. Rett.
10x60_3^{15/16}"x23^{5/8}"

78 ■



677K2SR Cotto Nat. Rett.
15x30_5^{7/8}"x11^{13/16}"

78 ■



607K2RZ Cotto Nat. Rett.
60x60_23^{5/8}"x23^{5/8}"

71 ■

AntiSlip

Si consiglia la posa con fuga 2 mm - Laying with a 2 mm-joint is recommended



Alto traffico pedonale
(es. stazioni ferroviarie, aeroporti, centri commerciali)

Heavy pedestrian traffic
(e.g. railway stations, airports, retail malls)

Piétinement intense
(ex. gares, aéroports, centres commerciaux)

Starker Fußgängerverkehr
(z.B. Bahnhöfe, Flughäfen, Einkaufszentren)

Alto tráfico peatonal
(por ej. estaciones de tren, aeropuertos, centros comerciales).

Интенсивное пешеходное движение
(напр., железнодорожные вокзалы, аэропорты)



colours / sizes - couleurs / formats - farben / formate - colores / tamaños - цвета / форматы

colori/formati

BROWN



987K6R Brown Nat. Rett.
60x120_23^{5/8}"x47^{1/4}"

79B ■



557K6R Brown Nat. Rett.
30x120_11^{13/16}"x47^{1/4}"

80 ■



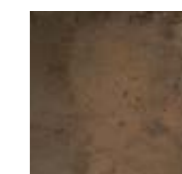
607K6R Brown Nat. Rett.
60x60_23^{5/8}"x23^{5/8}"

71 ■



637K6SR Brown Nat. Rett.
30x60_11^{13/16}"x23^{5/8}"

71 ■



307K6SR Brown Nat. Rett.
30x30_11^{13/16}"x11^{13/16}"

67 ■



977K6R Brown Nat. Rett.
15x60_5^{7/8}"x23^{5/8}"

78 ■



117K6R Brown Nat. Rett.
10x60_3^{15/16}"x23^{5/8}"

78 ■



677K6SR Brown Nat. Rett.
15x30_5^{7/8}"x11^{13/16}"

78 ■



607K6RZ Brown Nat. Rett.
60x60_23^{5/8}"x23^{5/8}"

71 ■

AntiSlip

Si consiglia la posa con fuga 2 mm - Laying with a 2 mm-joint is recommended



Alto traffico pedonale
(es. stazioni ferroviarie, aeroporti, centri commerciali)

Heavy pedestrian traffic
(e.g. railway stations, airports, retail malls)

Piétinement intense
(ex. gares, aéroports, centres commerciaux)

Starker Fußgängerverkehr
(z.B. Bahnhöfe, Flughäfen, Einkaufszentren)

Alto tráfico peatonal
(por ej. estaciones de tren, aeropuertos, centros comerciales).

Интенсивное пешеходное движение
(напр., железнодорожные вокзалы, аэропорты)

GREY



987K8R Grey Nat. Rett.
60x120_23^{5/8}"x47^{1/4}"

79B ■



557K8R Grey Nat. Rett.
30x120_11^{13/16}"x47^{1/4}"

80 ■



607K8R Grey Nat. Rett.
60x60_23^{5/8}"x23^{5/8}"

71 ■



637K8SR Grey Nat. Rett.
30x60_11^{13/16}"x23^{5/8}"

71 ■



307K8SR Grey Nat. Rett.
30x30_11^{13/16}"x11^{13/16}"

67 ■



977K8R Grey Nat. Rett.
15x60_5^{7/8}"x23^{5/8}"

78 ■



117K8R Grey Nat. Rett.
10x60_3^{15/16}"x23^{5/8}"

78 ■



677K8SR Grey Nat. Rett.
15x30_5^{7/8}"x11^{13/16}"

78 ■



607K8RZ Grey Nat. Rett.
60x60_23^{5/8}"x23^{5/8}"

71 ■

AntiSlip

Si consiglia la posa con fuga 2 mm - Laying with a 2 mm-joint is recommended



Alto traffico pedonale
(es. stazioni ferroviarie, aeroporti, centri commerciali)

Heavy pedestrian traffic
(e.g. railway stations, airports, retail malls)

Piétinement intense
(ex. gares, aéroports, centres commerciaux)

Starker Fußgängerverkehr
(z.B. Bahnhöfe, Flughäfen, Einkaufszentren)

Alto tráfico peatonal
(por ej. estaciones de tren, aeropuertos, centros comerciales).

Интенсивное пешеходное движение
(напр., железнодорожные вокзалы, аэропорты)

ACUSTICO 60



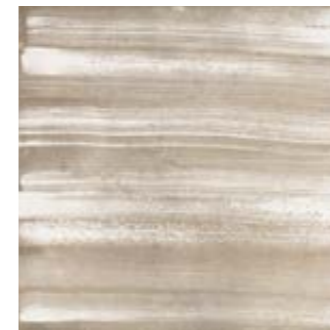
607K0RB White Nat. Rett.
60x60_23^{5/8}"x23^{5/8}"
PCS. BOX. 3 87 ■



607K3RB Sand Nat. Rett.
60x60_23^{5/8}"x23^{5/8}"
PCS. BOX. 3 87 ■



607K2RB Cotto Nat. Rett.
60x60_23^{5/8}"x23^{5/8}"
PCS. BOX. 3 87 ■



607K6RB Brown Nat. Rett.
60x60_23^{5/8}"x23^{5/8}"
PCS. BOX. 3 87 ■



607K8RB Grey Nat. Rett.
60x60_23^{5/8}"x23^{5/8}"
PCS. BOX. 3 87 ■



ACUSTICO 30



307KORB White Nat. Rett.
30x30_11^{13/16}"x11^{13/16}"
PCS. BOX. 4 46 ■



307K3RB Sand Nat. Rett.
30x30_11^{13/16}"x11^{13/16}"
PCS. BOX. 4 46 ■



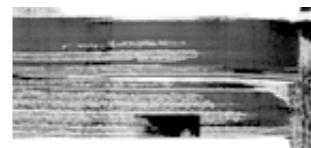
307K2RB Cotto Nat. Rett.
30x30_11^{13/16}"x11^{13/16}"
PCS. BOX. 4 46 ■



307K6RB Brown Nat. Rett.
30x30_11^{13/16}"x11^{13/16}"
PCS. BOX. 4 46 ■



307K8RB Grey Nat. Rett.
30x30_11^{13/16}"x11^{13/16}"
PCS. BOX. 4 46 ■



MOSAICO* TESSERA/CHIP 2,3x2,3 (7/8"x 7/8")



Z307K0 White Nat.
30x30_11^{13/16}"x11^{13/16}"
PCS. BOX. 5 101 ■



Z307K3 Sand Nat.
30x30_11^{13/16}"x11^{13/16}"
PCS. BOX. 5 101 ■



Z307K2 Cotto Nat.
30x30_11^{13/16}"x11^{13/16}"
PCS. BOX. 5 101 ■



Z307K6 Brown Nat.
30x30_11^{13/16}"x11^{13/16}"
PCS. BOX. 5 101 ■



Z307K8 Grey Nat.
30x30_11^{13/16}"x11^{13/16}"
PCS. BOX. 5 101 ■

* Su rete in fibra - On fibre mesh backing - Sur filet en fibre de verre - Auf Glasfasernetz - Sobre malla de fibra - На волоконной сетке



pezzi speciali



GRADONE - STEP
CR7K0R White Nat. Rett.
CR7K3R Sand Nat. Rett.
CR7K2R Cotto Nat. Rett.
CR7K6R Brown Nat. Rett.
CR7K8R Grey Nat. Rett.

33x120x3,2x3,2_12^{15/16}"x47^{1/4}"x1^{1/4}"x1^{1/4}"
PCS. BOX 2 96 ■



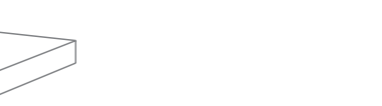
ANGOLARE - CORNER TILE
727K0R White Nat. Rett.
727K3R Sand Nat. Rett.
727K2R Cotto Nat. Rett.
727K6R Brown Nat. Rett.
727K8R Grey Nat. Rett.

33x33x3,2x3,2_12^{15/16}"x12^{15/16}"x1^{1/4}"x1^{1/4}"
PCS. BOX 2 86 ■



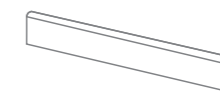
ANGOLARE DX - CORNER TILE DX
AC7K0RD White Nat. Rett.
AC7K3RD Sand Nat. Rett.
AC7K2RD Cotto Nat. Rett.
AC7K6RD Brown Nat. Rett.
AC7K8RD Grey Nat. Rett.

33x120x3,2x3,2_12^{15/16}"x47^{1/4}"x1^{1/4}"x1^{1/4}"
PCS. BOX 1 98 ■



ANGOLARE SX - CORNER TILE SX
AC7K0RS White Nat. Rett.
AC7K3RS Sand Nat. Rett.
AC7K2RS Cotto Nat. Rett.
AC7K6RS Brown Nat. Rett.
AC7K8RS Grey Nat. Rett.

33x120x3,2x3,2_12^{15/16}"x47^{1/4}"x1^{1/4}"x1^{1/4}"
PCS. BOX 1 98 ■



BATTISCOPIA - SKIRTING
877K0R White Nat. Rett.
877K3R Sand Nat. Rett.
877K2R Cotto Nat. Rett.
877K6R Brown Nat. Rett.
877K8R Grey Nat. Rett.

7,5x60_2^{15/16}"x23^{5/8}"
PCS. BOX 15 10 ■

ACUSTICO 12

Dry - Pressed Ceramic Tiles ISO 13006 : 2012 Annex G - UNI EN 14411 : 2012 Annex G - Bla GL



a new life now

CARATTERISTICHE TECNICHE Technical Features - Caracteristiques Techniques Technische Eigenschaften - Caracteristicas Tecnicas Технические Характеристики		NORMA Standard - Norme Norm - Norma - Норма	VALORI Value - Valeur Vorgabe - Valor - Средние
	PLANARITÀ Flatness - Planéité - Ebenflächigkeit - Planiyud Плоскостность	UNI EN ISO 10545/2	± 0,26% / ± 1,5mm
		ASTM C485 Warpage	
		Calibrated ± 0,75% (max ± 0,09 in)	-
		Rectified ± 0,40% (max ± 0,05 in-size ≤ 60cm) (max ± 0,07 in-size > 60cm)	± 0,25% (max ± 0,05 in-size ≤ 60cm) (max ± 0,07 in-size > 60cm)
	ASSORBIMENTO D'ACQUA - Valore medio in % Water absorption - Average value expressed in % Absorption d'eau - Valeur moyenne en % Wasseraufnahme - Durchschnittswert in % Absorción de agua - Valor medio en % Поглощение воды	UNI EN ISO 10545/3 ≤ 0,5 % ASTM C373	Conforme Compliant
	RESISTENZA ALLA FLESSIONE Modulus of rupture - Resistance a la flexion Biegefestigkeit - Resistencia a la flexion Прочность на изгиб	UNI EN ISO 10545/4	≥ 50 N/mm ²
	FORZA DI ROTTURA Breaking strength - Résistance à la rupture Bruchlast - Resistencia a la rotura Разрывное усилие	UNI EN ISO 10545/4 ASTM C648	≥ 2000 N 700 LBS
	RESISTENZA AL GELO Frost resistance - Résistance au gel - Frostbeständigkeit Resistencia a las heladas - Морозостойкость	UNI EN ISO 10545/12	Conforme
		ASTM C1026	Unaffected
	RESISTENZA CHIMICA ad alte e basse concentrazioni di acidi e basi Chemical resistance to high and low acid and basic concentrations Résistance chimique aux hautes et basses concentrations d'acides et de bases Chemikalienfestigkeit bei hohen und niedrigen Konzentrationen von Säuren und Basen Resistencia química con concentraciones altas y bajas de ácidos y bases Химическая стойкость к высоким и низким концентрациям кислот и щелочей	UNI EN ISO 10545/13	GA - GLA - GHA
		ASTM C-650	Unaffected
	RESISTENZA ALLE MACCHIE Stain resistance - Résistance aux taches Fleckenbeständigkeit - Resistencia a las manchas Стойкость к образованию пятен	UNI EN ISO 10545/14	5
		CTI 81-7D	No Evident Variation
	COEFFICIENTE DI ATTRITO Slip resistance - Coefficient de glissement Rutschfestigkeit Barfußbereich Coeficiente de atrito medio - Коэффициент трения	DIN 51130	NAT. R10
		DIN 51097	B (A+B)
		ANSI A 137.1- 2012 DCOF (Section 9.6)	Dry: 0,69* Wet: 0,61*
		B.C.R.A.	≥ 0,40
			ANTISLIP R11
			C (A+B+C)
			Dry: 0,88* Wet: 0,90*
			≥ 0,40

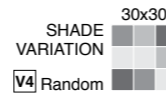
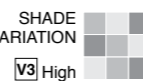
* Values obtained with certificate n° 20130134. Date 11/21/2013.

PER MAGGIORI CHIARIMENTI SUI DATI TECNICI E SULLA GARANZIA CONSULTARE IL CATALOGO GENERALE IN VIGORE. For further information on technical specifications, please consult our up-dated general catalogue. Pour toutes informations supplémentaires sur les données techniques et sur les garanties, veuillez consulter le catalogue général en vigueur. - Für weitere Informationen über technische Daten und Garantie beziehen sie sich bitte auf den aktuellen Gesamtkatalog. Para ulteriores informaciones sobre los datos técnicos y la garantía, vease el catalogo general en vigor. Более подробную информацию о технических данных и гарантии смотрите в действующем сводем катал.

IMBALLI E PESI Packing and weight - Emballages et poids - Verpackung und gewicht - Embalajes y pesos - УПАКОВКА И ВЕС									
Articolo Item Reference Artikel Articulo Артикула	Formato (cm) Size (cm) Format (cm) Format (cm) Тamaño (cm) Формат (cm)	Spessore (mm) Thickness (mm) Epaisseur (mm) Stärke (mm) Espesor (mm) Толщина (mm)	Pz. x Mq. Pieces x Sqm Pcs / M ² Stk. x Qm Pzs x Mc. Шт x Кв.М.	Pz. x Scat. Pieces x Box Pcs / Bte Stk. x Krt. Pzs x Caja Шт x Кор.	Mq. x Scat. Sqm x Box M ² / Bte Qm x Krt. Mc. x Caja Кв.М. x Кор.	Peso x Scat. (Kg) Weight x Box (Kg) Poids / Bte (Kg) Gewicht x Krt. (Kg) Peso x Caja (Kg) Вес x Кор. (Kg)	Scat. x Pal. Boxes x Pal. Bte / Pal. Krt. x Pal. Cajas x Pal. Кор. x Подд.	Mq. x Pal. Sqm x Pal. M ² / Pal. Qm x Pal. Mc. x Pal. Кв.М x Подд.	Peso x Pal.(Kg) Weight x Pal. (Kg) Poids / Pal. (Kg) Gewicht x Pal. (Kg) Peso x Pal. (Kg) Вес x Подд (Kg)
987K_R	60x120	10	1,39	2	1,440	36,20	22	31,68	796
557K_R	30x120	10	2,78	4	1,440	34,40	22	31,68	757
607K_R/RZ	60x60	10	2,78	3	1,080	25,00	40	43,20	1000
637K_SR	30x60	10	5,56	6	1,080	25,00	40	43,20	1000
977K_R	15x60	10	11,11	12	1,080	25,00	50	54,00	1250
117K_R	10x60	10	16,67	12	0,720	16,70	60	43,20	1002
307K_SR	30x30	10	11,11	12	1,080	26,50	40	43,20	1060
677K_SR	15x30	10	22,23	18	0,810	20,20	70	56,70	1414
Z307K_	30x30	10	11,11	5	0,450	10,50	-	-	-



a brand of EMILCERAMICA S.p.A.





a brand of EMILCERAMICA S.p.A.
Sede amministrativa/commerciale:
Via Ghiarola Nuova, 29/33
41042 Fiorano Modenese (MO) Italy
Tel. +39 0536 998701 - Fax +39 0536 998702
info@emilceramicagroup.it - www.cerviva.it

