

M E T A L

M E T A L L I C S L A B S

COTTO D'ESTE[®]
Nuove Superfici

kerlite
5plus

PORCELLANATO
CERAMICO
SOTTILE

THIN
PORCELAIN
STONEWARE

GRÈS
CÉRAME
FIN

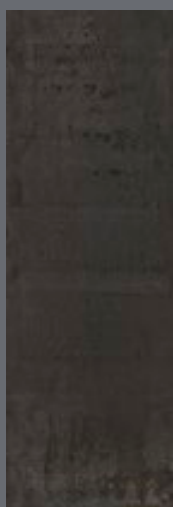
DÜNNE
KERAMIKSTEINZEUG



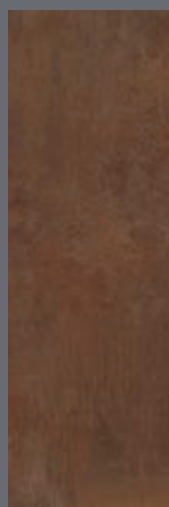
M E T A L

M E T A L L I C S L A B S

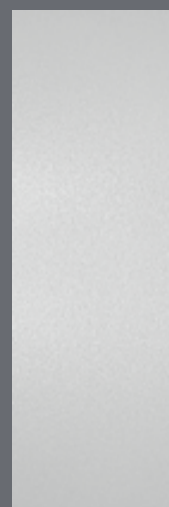
COLORI / COLOURS



IRON



CORTEN



PLATINUM

SPESSORE / THICKNESS

5,5 mm

FINITURE / FINISHING

RETTIFICATO CON ROMPIFILO / RECTIFIED AND CHAMFER

FORMATI / SIZES



300X100 cm
CORTEN, IRON, PLATINUM



100X100 cm
CORTEN, IRON



50X100 cm
PLATINUM

PROTEZIONE ANTIBATTERICA / ANTIBACTERIAL PROTECTION



kerlite
5plus

PORCELLANATO
CERAMICO
SOTTILE



M E T A L

M E T A L L I C S L A B S

P L A T I N U M









M E T A L P L A T I N U M

METAL PLATINUM







C O R T E N

M E T A L C O R T E N



M E T A L C O R T E N





M E T A L C O R T E N





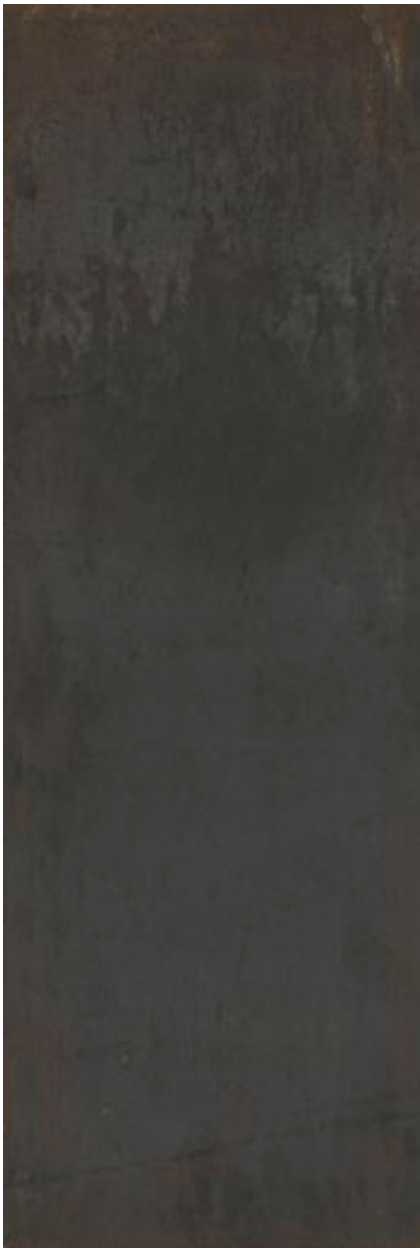
I R O N



M E T T A L I R O N



M E T A L I R O N





M E T A L

M E T A L L I C S L A B S



MASSA / BODY

Blα UGL - IMPASTO COLORATO / FULL COLOR

DECORAZIONE / DECORATION

INKJET HD effetto / effect **3D**

STONALIZZAZIONE / DESHADING

V1 PLATINUM

V2 IRON

V3 CORTEN

RESISTENZA ALLO SCIVOLAMENTO / SLIPPERING RESISTANCE

DIN 51130 **R9** CORTEN, PLATINUM

BCR-TORTUS $\mu >0,40$ CORTEN

ANSI A 137.1: 2012 - BOT 3000 **DCOF $\geq 0,42$** CORTEN, IRON

RESISTENZA ALLE MACCHIE / STAIN RESISTANCE

CLASSE 5

RESISTENZA ALL'ATTACCO CHIMICO / RESISTANCE TO CHEMICAL ETCHING

ULA-UHA

SFORZO DI ROTTURA (S) / BREAKING STRENGTH (S)

≥ 1200 N

Valore riferito al pezzo completo (lastra e rinforzo) / Value refers to complete piece (slab and reinforcement)

VISIBILITA' DELLE IMPRONTE / TREAD MARK VISIBILITY

A PLATINUM, IRON

B CORTEN

FACILITA' DI PULIZIA / CLEANING EASINESS

1 PLATINUM, IRON

2 CORTEN

GARANZIE / GUARANTEES

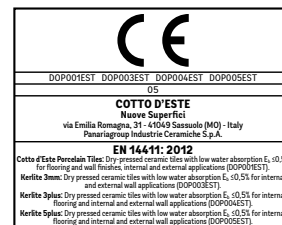


20 ANNI Residenziale
20 YEARS Residential

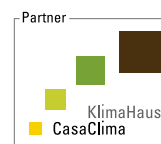


10 ANNI Pubblico
10 YEARS Public

green mission



Stabilimento di
FIORANO (MO)



“Ceramics of Italy”



MISTO
Carta da fonti gestite in maniera responsabile
Paper from responsible sources
FSC® C092599

M E T A L

COTTO D'ESTE[®] | LA
BELLEZZA
IN
CERAMICA

N u o v e S u p e r f i c i

Via Emilia Romagna, 31 41049 Sassuolo (MO) Italy
+39 0536 814 911 fax +39 0536 814 921
cottodeste.it - info@cottodeste.it
PANARIAGROUP INDUSTRIE CERAMICHE S.p.A.